



MANAWATŪ RIVER

SOURCE TO SEA

2017 – 2040 Draft

A WHOLE-OF-CATCHMENT APPROACH TO ENHANCING BIODIVERSITY

This document is second in a series of three documents. For more information, please contact: coordinator@enm.org.nz



COMMUNICATING



CONNECTING



COLLABORATING

Contents

| | |
|---|----|
| 1. Introduction | 4 |
| 2. Vision and Mission | 4 |
| 3. Objectives..... | 4 |
| 4. Guiding Principles for Source to Sea Initiatives | 6 |
| 5. Scope..... | 7 |
| 6. Working Together | 7 |
| 7. Expanding and Enhancing the Conversations | 8 |
| 8. High Level Actions and Timelines..... | 9 |
| 9. Initial Set-Up Budget | 11 |

Document History

This document is the second in a series of three documents.

| Document Name | Title | Purpose |
|---|---|--|
| Document One In print and online | Manawatū River Source to Sea High Level Summary | Start conversations |
| Document Two In print and online | Manawatū River Source to Sea Expanded Overview | Provide more background information, engage in more in-depth conversations |
| Document Three Online only | Manawatū River Source to Sea Planning Document | Detailed action plan and information repository, to be updated on an ongoing basis |

Disclaimer

This document is very much a living document. It will develop as conversations continue. At the end of the day, how other entities choose to become involved with Manawatū River Source to Sea will be up to them, and how this will translate into mutual benefits is as yet unknown. Whatever happens, the vision and focus are a huge positive with the potential to benefit our environment, our backyard, and our communities both individually, and at the catchment level.

Thanks

The production of this document was achieved thanks to funding or in-kind contributions from Horizons Regional Council, Massey University and Palmerston North City Environmental Trust.



Map of Current and Planned Initiatives

Broad-scale map of existing and new initiatives as per 6 September 2017.

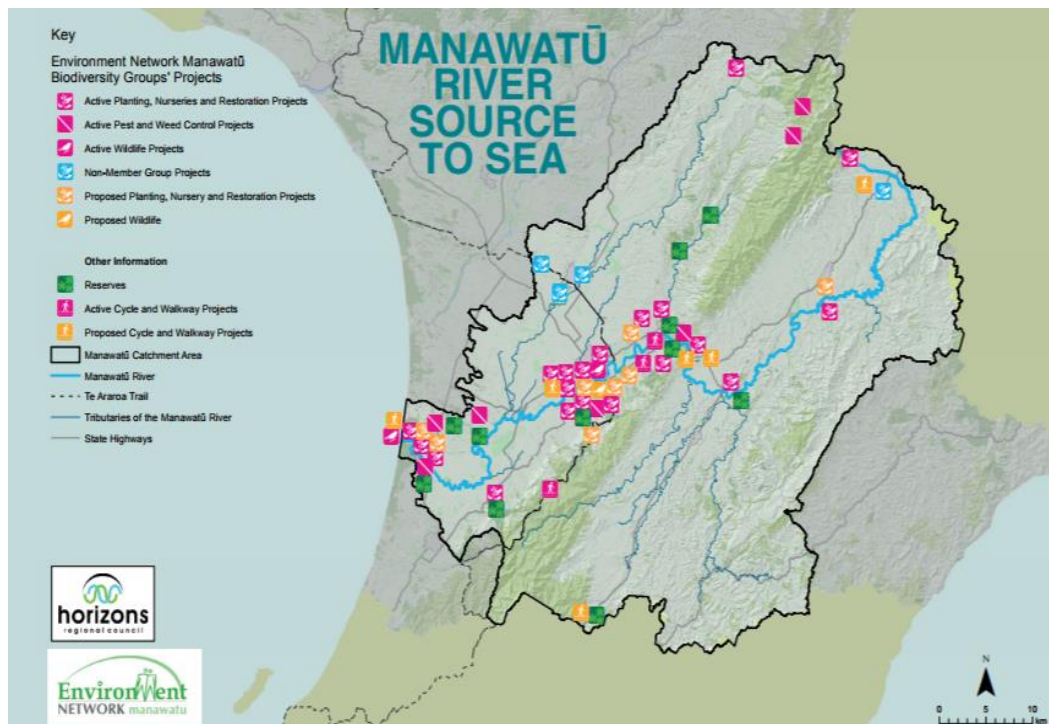


Photo: Mangatainoka River south of Woodville

1. Introduction

This proposal for a “Manawatū River Source to Sea” programme intends to bring together the many projects throughout the Manawatū River Catchment which are working at enhancing *biodiversity*, and through that, the health of rivers and the wellbeing of our (human) communities. “Manawatū River Source to Sea” is a community-led initiative and has been developed by the Biodiversity Cluster Group of Environment Network Manawatu (ENM¹) and members of the wider public. The aim of Manawatū River Source to Sea is to sustain and enhance the biodiversity of the Manawatū River Catchment through maximising the power and benefits from working together, and sharing ideas and resources. This is an inclusive programme that invites participation from iwi/hapū and all sectors and communities in the region.

Definition of *biodiversity*: In the context of Manawatū River Source to Sea, “*biodiversity*” encompasses the “diverse biota, fauna and flora native to New Zealand, especially that endemic to the Manawatū River Catchment, functioning in natural ways, and specified in the context of actual localities and spatial scales, be it on land, in stream or along the coast” (Definition: Dr Jill Rapson, 2016). At times, the Source to Sea project team or one of its groups may choose to engage in projects that aim to address anthropocentric faunal and floral issues which enhance the functioning of our natural ecosystems.

2. Vision and Mission

Vision: What Manawatū River Source to Sea will look like in 2040

“Manawatū River Source to Sea” is an integrated network of biodiversity-focused initiatives, including sustainable business activities, and other nature-related activities that collectively contribute to the enhancement of biodiversity and provide benefits to the Manawatū River Catchment's community.

Mission: Our overall approach to reach our objectives

To collaborate and connect with the Manawatū River Catchment's community in a manner that drives the enhancement of *biodiversity* and the parallel development of a sustainable extended nature-based experience from source to sea.

3. Objectives

The following objectives were developed in July 2017. The underlined text matches the text provided in the summary document (Document 1). Additional points have been added in line with the discussions at the visioning and planning workshop. As conversations progress, the objectives will be further enhanced with timelines and measurable outcomes.

¹ Environment Network Manawatu is a charitable Incorporated Society, founded by its members in 2001. ENM's role is to communicate, co-ordinate and network in the interest of its member groups. This includes a monthly newsletter, an event calendar, volunteer co-ordination and organisation of workshops, field trips and meetings. ENM's agenda is reviewed and set by its member groups. Member groups meet twice annually at the Special General Meeting and at the Annual General Meeting. ENM, as a rule, does not run projects on the ground. However, it can give its members and other interested community groups support and tools to be active on the ground.

Objectives: What we want to achieve

1. Enhanced biodiversity (i.e. indigenous and endemic biodiversity) throughout the catchment:
Ultimately, there will be a nationally recognised model for the regeneration of New Zealand's biodiversity that:
 - a. Is clear about interactions of biodiversity and humans and the potential consequences thereof;
 - b. Provides multiple benefits, including social, communal, environmental, cultural and economic wellbeing;
 - c. Provides natural places for human visitors alongside reserved or protected areas free from human visits.
2. A physically connected network of initiatives enhancing biodiversity.
3. A range of sustainable, extended nature-based experiences connected via walking and biking trails:
A network of biking and/or walking trails will allow visitors to go on an educational journey from the source to the sea (including tributaries) experiencing:
 - a. Biodiversity-focused initiatives;
 - b. Sustainable business activities that contribute to the enhancement of biodiversity and provide benefits to our community including positive economic outcomes;
 - c. Other nature-related or cultural activities.
4. An enlightened approach to business, enhancing biodiversity simultaneously with the cultural, social, and economic wellbeing of our community:
An increased number of sustainable business activities with improved visibility, that contribute to the enhancement of biodiversity and provide benefits to our community, including positive economic outcomes.
5. Community pride in, and connectivity with, a biodiversity-rich catchment:
Our community takes pride in the Manawatū River, and is connected with nature on an increasingly regular basis, including through:
 - lifestyles;
 - opportunities for social, educational, recreational and leisure activities
 - expression of cultural values;
 - sustainable tourism opportunities
 - sustainable business activities
 - opportunities to volunteer
6. Communities which are in support of the Manawatū River Source to Sea vision:
Manawatū River Source to Sea is well supported by our community, including its skilled workforce and sustainable volunteer base, and adequate infrastructure and associated funding.
7. Communities which are collaborating with each other and relevant agencies throughout the catchment to enhance biodiversity:
There is increased collaboration within the Manawatū River catchment's community and with regional, district and city councils, educational institutions, central government and funding bodies.

8. A well-established research and monitoring programme with clear goals and showing progress over time:

Established and new research and monitoring programmes, including Citizen Science, are used to inform the progress of the “Manawatu River Source to Sea” programme, and for wider environmental educational purposes as well as for scientific reporting.

4. Guiding Principles for Source to Sea Initiatives

Manawatū River Source to Sea will be on the right track, as long as all community groups keep asking the following three simple questions when they initiate projects or business opportunities:

1. Does it maintain and/or enhance biodiversity (including soil biodiversity)?
2. Does it maintain and/or enhance water quality?
3. Does it contribute to the wellbeing of the human community?

If the answer is “no” to any of the three questions

- Should the initiative go ahead?
- Or can something be done to meet the above criteria?



Photo: Wetland below Ashhurst Domain

5. Scope

In a programme of work of this order of magnitude it is always important to understand what is within scope and what is outside. Table 1 sets out what this initiative is and what it is not.

Table 1: Manawatū River Source to Sea Scope

| What it is | What it is not |
|---|--|
| A community-driven source to sea initiative covering the Manawatū River Catchment | An initiative covering other catchment/regions An initiative that endeavours to turn the catchment into a Regional or National Park |
| Inclusive – open to all community groups that can subscribe to the vision, mission, objectives and guiding principles of Manawatū River Source to Sea | Exclusive to those currently involved |
| A programme to enhance biodiversity, river health and community wellbeing | A free-for-all brand that can be used without living up to the overall vision |

6. Working Together

There are many small and large community initiatives throughout the catchment. They all aim at making a difference to the environment and the wellbeing of their communities. The individual groups have recognised the power of collaboration and connectivity.

The Manawatū River Source to Sea programme of work will happen on two levels:

- On the level of the overall catchment, a Manawatū River Source to Sea umbrella group will facilitate and support existing initiatives and the initiation of new ones;
- On the ground, individual community groups will own and drive their localised projects.

Provision of the Manawatū River Source to Sea brand will help:

Provision of support and collaboration across member groups. As many of our cluster members have commented, working in isolation can be lonely. By working under a united brand and vision, individual groups can benefit from:

- Access to bigger funds for the region;
- A united “cause” – being part of a bigger vision without losing local focus;
- Increased community involvement across the catchment;
- Sharing resources and building capacity;
- Mitigation of carbon footprint;
- Leaving a legacy of something better behind.

Other planning frameworks informing the process:

Manawatū River Source to Sea will not work in isolation. There are already numerous initiatives and planning frameworks in place which have inspired and informed the Manawatū River Source to Sea

initiative. Going forward we are striving for regular dialogue and collaboration. The following list is a start and we will keep adding as we learn about other initiatives:

- Manawatu River Leaders' Forum Accord and Action Plan 2016 - 2021;
- Councils' 10-year, 3-year, and annual plans (HRC, PNCC, MDC, TDC, HDC);
- Horizons One Plan;
- Iwi/hapū – Taiao strategies;
- Te Mana o Te Wai project – Tu Te Manawa;
- PNCC – Sustainability Strategy and Plan;
- PNCC – Biodiversity and Vegetation plans;
- PNCC – Manawatu River Framework;
- PNCC – Parks and Reserve Plan (2016)
- DOC Conservation Strategy;
- Ashhurst Village Vision Planning.

7. Expanding and Enhancing the Conversations

In terms of partners and stakeholders, there are many. One key work-stream will be to establish those relationships and partnerships in a manner that will assist in meeting the objectives of Manawatū River Source to Sea. Collaboration and synergy are at the heart of our programme, the overall priority being to sustain and enhance biodiversity.

The following interested parties have been identified so far:

- Iwi/hapū throughout the catchment;
- Manawatu River Leaders' Forum;
- Tu Te Manawa;
- Landowners/Farmers;
- ACRE – Agricultural Communities Respecting the Environment;
- Manawatū, Taranaki and Horowhenua District Councils;
- Rural and urban communities throughout the catchment;
- Business community;
- Industry Interest Groups, e.g.
 - Federated Farmers;
 - Dairy NZ;
- Economic Development agencies
 - CEDA;
 - Accelerate 25.

8. High Level Actions and Timelines

The speed with which Manawatū River Source to Sea will develop, will depend on the capacity of participating groups. In the first instance activities are focused on establishing the Group's governance, aims and reach. Table 2 provides a high-level summary of actions as they are currently understood. A more comprehensive and detailed action plan is contained in Document 3, Part II.

Table 2: High Level Actions and Timelines as per August 2017

| Shared Vision | | | | |
|-------------------|---|---|--|---------|
| | Overall Manawatū River Source-to-Sea led by Biodiversity Cluster Group | Timing | Local initiatives led by community groups | Timing |
| Governance | At the ENM AGM on 27 September 2017, ENM member groups supported a motion for ENM to act as the interim legal entity for Manawatū River Source to Sea | DONE | Individual groups/projects continue to have their own structure | Ongoing |
| Strategies | Marketing and communication - Design and present documents outlining and detailing our aims, vision and structure; Documents 1 + 2 available for consultation - Manawatū River Source to Sea brand established - Communication strategy initiated - Visitor Strategy outlined Collaboration and building relationships Funding - sources identified | Ongoing DONE DONE In Progress 2017/18 Ongoing Ongoing Ongoing | Individual groups/projects have either their own or can benefit from overall programme | Ongoing |

| Shared Vision | | | | |
|--|--|--|--|-------------------|
| | Overall Manawātū River Source-to-Sea led by Biodiversity Cluster Group | Timing | Local initiatives led by community groups | Timing |
| | Volunteers - contacts developed | | | |
| Project Management | There is general agreement that a dedicated project manager and an administrator could help to accelerate progress | ASAP | Individual groups will have their own managers for on-the-ground projects | Ongoing |
| Masterplan for on-the-ground activities | GIS Mapping – Baseline Big Picture Development of project layers | DONE ongoing | Each community group will decide how much and what detail to capture for sharing about their individual projects | Ongoing |
| Biodiversity initiatives | Site Assessments – starting with what we know | Once the base mapping information is available | Each initiative and/or community group will have a detailed assessment reflecting the scope of the project | ongoing |
| Implementation | Identify overall programme of work and potential “owners”; network with all relevant stakeholders | Ongoing | Identify specific work required for local projects | ongoing |
| Research, monitoring and reporting | To be set up along with the individual activities but in accordance with the overall plan | 6 monthly reviews | Project based | 6 monthly reviews |

9. Initial Set-Up Budget

The following table (Table 3) provides a draft budget to advance the work of the cluster for a three-year period.

A more comprehensive budget will be developed after stakeholder engagement has confirmed the scope of the project.

Table 3: Initial Set-Up Budget (three-year period)

| Work Streams | Activities Requiring Funding | Immediate Funding Requirement/Approach |
|---|---|--|
| Project management | Annual cost for Project manager and administrator to facilitate and grow the Manawatū River Source to Sea programme Office Operational Costs | Approx. \$350,000 (three years, two roles) \$15,000 (three years) |
| Communication, Marketing and Presentation | Design and print initial strategic documents | Estimate \$15 000 – \$24, 000 |
| Visitor strategy | Develop overarching strategy | Estimate \$50,000 |
| Collaboration – stakeholder engagement | Initially to be done by cluster members | In kind for now |
| Securing funding | Develop strategy Work with experts | To be confirmed |
| Develop volunteer programme | Compile databases and contact trees | In kind for now |
| Volunteers' safety | Develop safety protocols | In kind for now |
| GIS mapping | Training, development of concept and compilation of primary layers | In kind for now or by donation |
| On-the-ground project implementation | To be funded on a project by project basis | As occurs today |
| Monitoring and reporting | Citizen science based progress monitoring | To be confirmed |

A BRIEF HISTORY OF MANAWATŪ RIVER SOURCE TO SEA

Conversations to develop an overall biodiversity strategy for the Manawatū River Catchment were started by members of various community groups in 2014/15, who formed the Biodiversity Cluster. They asked Environment Network Manawatu (ENM) to facilitate communication, connections and collaboration. Initially quarterly meetings were open to all ENM member groups and the wider public. In June 2016 interested parties started to meet monthly to accelerate the conversations and progress a “master plan”.

Biodiversity cluster groups actively involved at various stages of the process were:

- Wildlife Foxton Trust
- Manawatu Estuary Trust
- A Rocha Manawatu
- Friends of Waitoetoe Park
- Ahimate Reserve Community
- Pit Park People Society Inc
- Green Corridors Palmerston North
- C.T. Keeble Memorial Forest Trust
- Kiwi Conservation Club
- NZ Landcare Trust
- Palmerston North City Environment Trust
- Te Ao Turoa Environmental Centre – Rangitaane o Manawatu
- Stoney Creek Catchment Care Group
- Ashhurst Action Group
- Forest & Bird Manawatu Branch
- Massey University
- Middle Districts Farm Forestry Association
- Palmerston North City Council
- Horizons Regional Council
- Department of Conservation
- Water Protection Society
- Spotless Facilities Services (NZ) Ltd
- Ruahine Whio Protection Trust



In addition, the following groups were regularly included in updates and consultation processes:

- Save our River Trust
- WECA
- REACT
- RECAP
- Te Kāuru Eastern Manawātū
- River Hapū Collective
- Te Araroa Manawatu Trust
- Wildbase Recovery Community Trust
- Apollo Butterfly Park
- Manawātū Walkways Promotion Society
- Railway Land Action Group
- Fish and Game
- Federated Farmers

Photo Credits: Vista (image above) – Tom Shannon. All others ENM. **Version:** 0.1 Print Date: March 2018